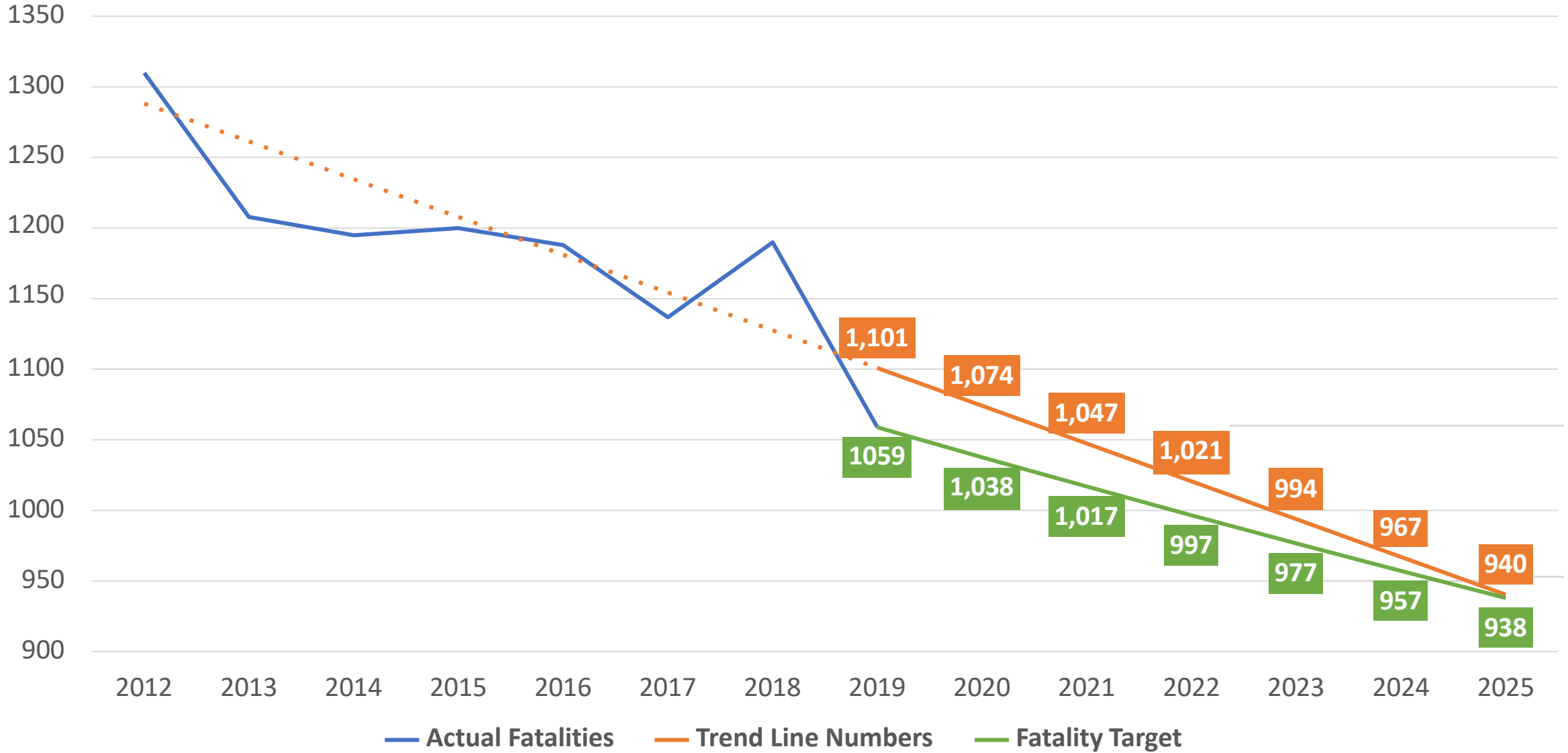


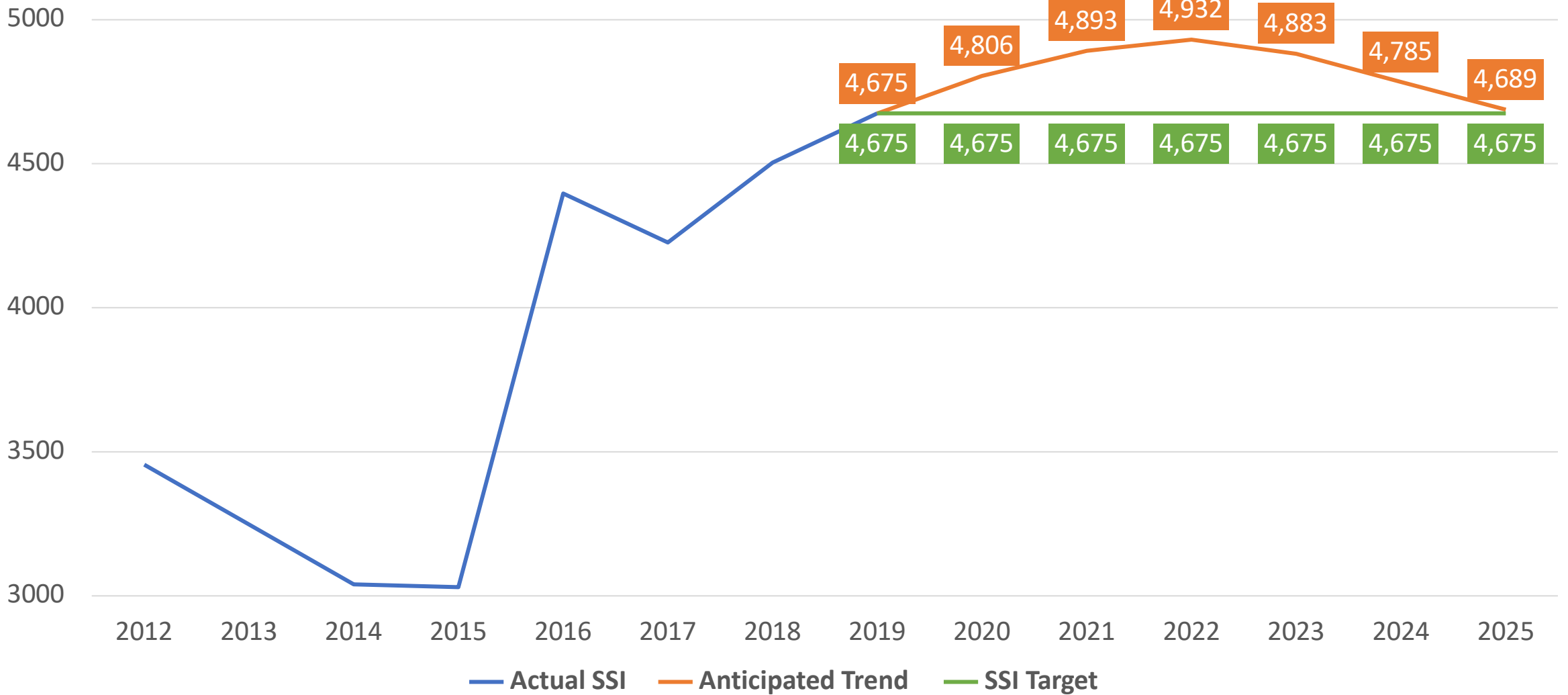
2021 Safety Performance Targets

PM-1

FATALITY TRENDS



SERIOUS INJURY TRENDS



2021 STATEWIDE TARGETS

Performance Measure	5-year Rolling Averages		
	TARGET 2017-2021	ACTUAL 2017-2021	BASELINE 2015-2019
Number of Fatalities	1,088.2		1154.8
Fatality Rate	1.059		1.135
Number of Serious Injuries	4,551.2		4166.6
Serious Injury Rate	4.431		4.097
Number of Non-motorized Fatalities and Serious Injuries	800.8		741.6

* Future VMT estimated to be 0.5% higher per year starting in 2020



2021 LANCASTER TARGETS

Performance Measure	5-year Rolling Averages		
	TARGET	ACTUAL	BASELINE
	2017-2021	2017-2021	2015-2019
Number of Fatalities	43.5		44.8
Fatality Rate	0.963		1.008
Number of Serious Injuries	225.2		208.4
Serious Injury Rate	4.984		4.689
Number of Non-motorized Fatalities and Serious Injuries	39.9		40.0

* Future VMT estimated to be 0.5% higher per year starting in 2020



Lancaster Performance History

2002-2015

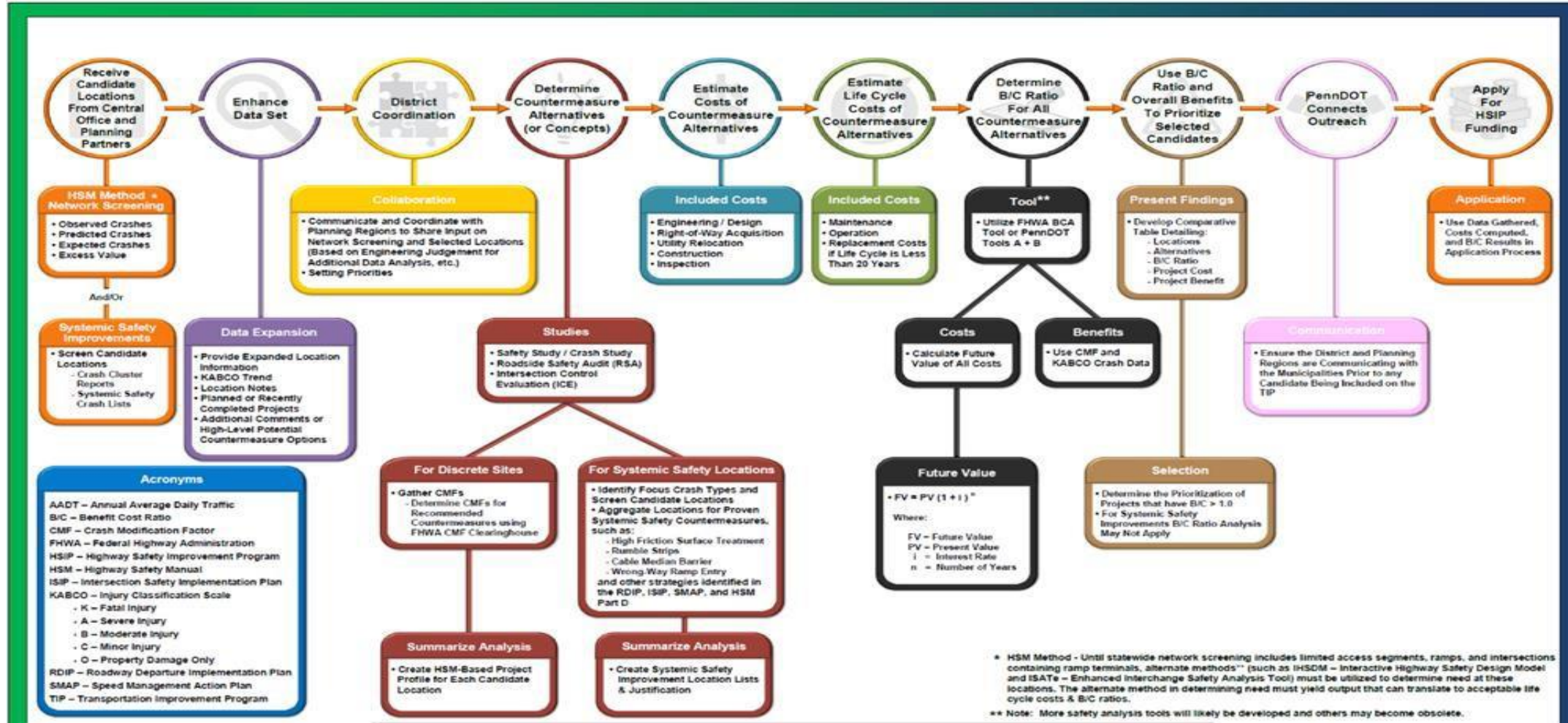
\$6.9 million investment in direct HSIP spending

Yielded 10% reduction in fatalities and serious injuries

BEST PRACTICES

Best Practices

Next Exit 



Safety Projects 2021-2024 TIP

- 30/462 Interchange Improvements
- US 322/US 222 Diverging Diamond Interchange
- Fruitville Pike Intersection Improvements
- Strasburg Pike/Rockvale Road Intersection Improvements
- US 30 Intersection Improvements (PA 896 to PA 772)

Challenges (Statewide Analysis)

- Statewide - 17% of fatalities / 25% of crashes on local roads
- Chronic underinvestment on these roads
- Pedestrian crashes over-represented in fatal crashes
- Systemic improvement 11X more cost effective than spot improvements,...
- Yet, they account for only 26% of safety spending



Potential Solutions

- Invest in low-cost strategies and countermeasures
- Cost effective examples:
 - Rumble strips, signing/pavement markings, modifying traffic signals
- Improve project scoping and tracking for performance

2021 LANCASTER TARGETS

Performance Measure	5-year Rolling Averages		
	TARGET	ACTUAL	BASELINE
	2017-2021	2017-2021	2015-2019
Number of Fatalities	43.5		44.8
Fatality Rate	0.963		1.008
Number of Serious Injuries	225.2		208.4
Serious Injury Rate	4.984		4.689
Number of Non-motorized Fatalities and Serious Injuries	39.9		40.0

* Future VMT estimated to be 0.5% higher per year starting in 2020

